



## STEP BY STEP INSTALLATION INSTRUCTIONS

FOR ALL DESIGNER SERIES  
KITCHEN WASTE & LAUNDRY UNITS



For further assistance in New Zealand  
**[www.tanova.co.nz](http://www.tanova.co.nz) or [www.fit-nz.co.nz](http://www.fit-nz.co.nz) or contact Fit 0800 852 258**

---

For further assistance in Vict, SA & Tas, **contact 1300 121 800**  
For further assistance in NSW, QLD, NT, ACT and WA, **contact 1300 222 600**  
**[www.tanovanz.com](http://www.tanovanz.com)**

---

Use in conjunction with full size template supplied with your unit

# DESIGNER SERIES INSTALLATION INSTRUCTIONS

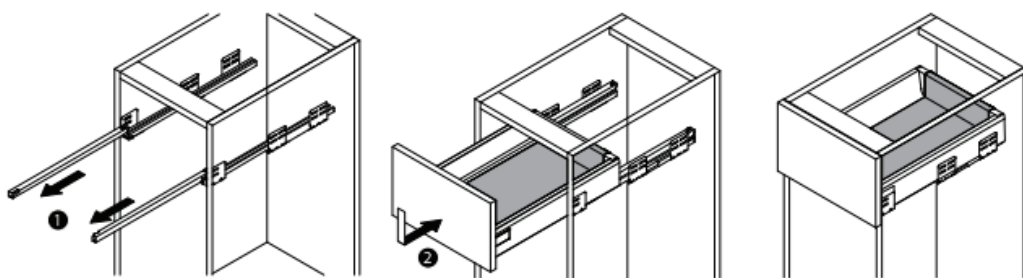
USE IN CONJUNCTION WITH THE FULL SIZE TEMPLATE SUPPLIED WITH YOUR UNIT

## STEP 1

**RUNNER POSITIONS** are on each **short** end of the template provided, marked **1 RHF** and **1 LHF**

1. Hold **Template** against the underside of the cabinet top rail and **1 RHF** flush with the right-hand cabinet side, and mark runner fixing positions as shown on template.
2. Repeat on left hand side of cabinet using the **1 LHF** edge of template.
3. **Fix Runners** to cabinet **THROUGH TOP ROW OF HOLES IN RUNNERS** using either 3 x M6 x 11 Euro Screws (Pre-drill with 5mm) or 3 x 6g x 15mm countersunk wood screws (Pre-drill with 3mm) per tab minimum.
4. Position **Top Cover** against the top of the cabinet and 3mm back from the front, screw off with the 8g x 15mm Pan screws. **Note: Top Cover** only supplied standard with waste systems.
5. Extend runners out the front of cabinet. Slide bin frame onto runners and engage tabs at rear, push bin assembly on firmly until the front connection "Clicks" into place.

### Drawer Insertion



## STEP 2

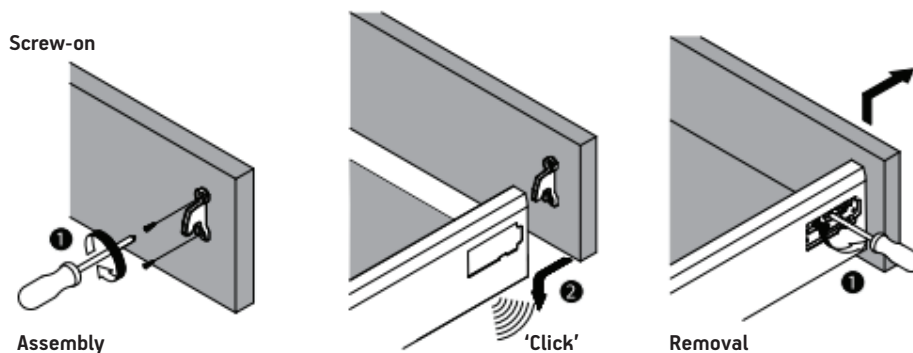
**DRAWER FRONT TEMPLATE** is on the **long** edge of the template provided, marked **2 Centre Top**.

6. On the back of the drawer front, mark the **Center line** of the drawer front. Measure down from the top of the drawer front the desired amount of **Cabinet overlay**.
7. Align the template center marks with the marked drawer front center line.
8. Move template upwards until flush with overlay position, mark drawer lower bracket and gallery rail fixing points and fit drawer and gallery rail connector brackets with the 6 x 6g x 15mm countersunk screws.

**NOTE:** If you have a **LOWSIDE TDS80** system to suit 800 Cabinet, take notice of the offset LH and RH centerline points,

"Centre TDS80LH" and "Centre TDS80RH"

### Drawer Front Assembly & Removal



9. Fit drawer front to drawer connector brackets.

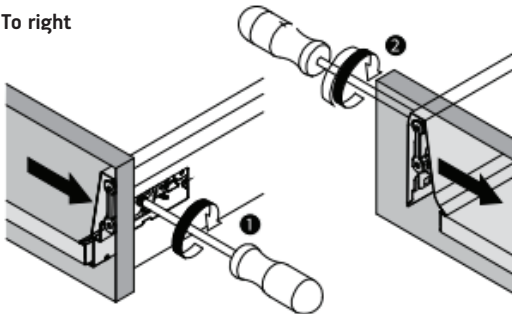
# STEP 3

# TANOVA

10. Loosen lock off screw, access sideways and height adjustment screws through the side of the drawer.

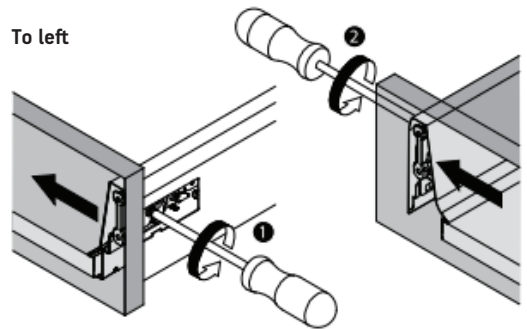
## Drawer Front - Side Adjustment

To right



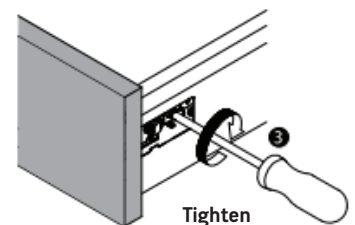
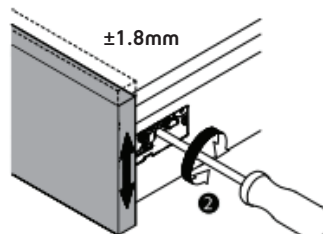
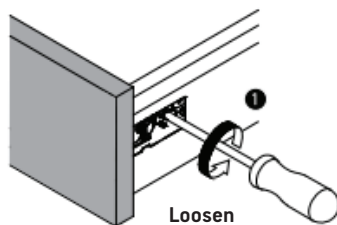
Adjustable by 1.25mm to the right

To left



Adjustable by 1.25mm to the left

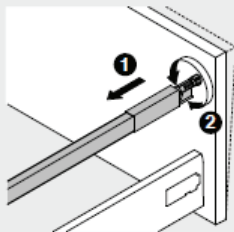
## Drawer Front - Height Adjustment



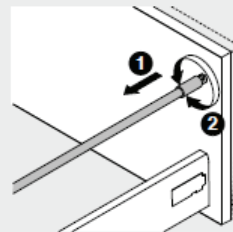
11. Adjust drawer front tilt on the gallery rail thread.

## Drawer Front Tilt Adjustment

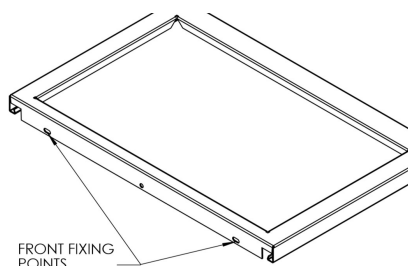
Rectangular Rail



Round Rail



12. Ensure adjustment lock off screw is tightened, and gallery rail cap clipped on.  
13. Fit cover cap to drawer side.  
14. Fix off top bin system frame to the drawer front with 2 8g x 15mm panhead screws.



15. Insert buckets or laundry hamper to system.

# TEMPLATE DIMENSIONS

# TANOVA

HIGHSIDE	A	B	C	D	E
TDS30	212mm	308mm	340mm	338mm	118.5mm
TDS35H	252mm	348mm	380mm	378mm	143.5mm
TDS40	212mm	308mm	340mm	338mm	168.5mm
TDS40-C	252mm	348mm	380mm	378mm	168.5mm

## LAUNDRY

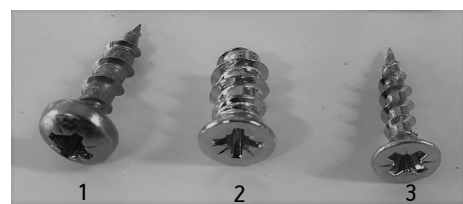
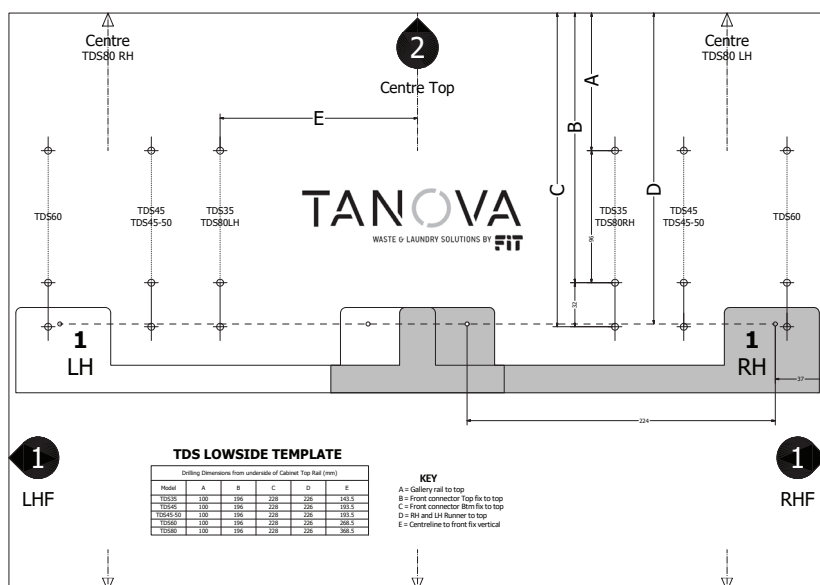
TDS35L	134mm	230mm	262mm	259mm	143.5mm
TDS40L	125mm	221mm	253mm	251mm	168.5mm
TDS60L	170mm	266mm	298mm	296mm	268.5mm
TDS45L	125mm	221mm	253mm	251mm	193.5mm

## LOWSIDE

TDS35	100mm	196mm	228mm	226mm	143.5mm
TDS45-50	100mm	196mm	228mm	226mm	193.5mm
TDS45	100mm	196mm	228mm	226mm	193.5mm
TDS60	100mm	196mm	228mm	226mm	268.5mm
TDS80	100mm	196mm	228mm	226mm	368.5mm

## KEY

- A = Gallery rail to top
- B = Front connector Top fix to top
- C = Front connector Btm fix to top
- D = RH and LH Runner to top
- E = Centreline to front fix vertical



## Fixing screws

1. Pan head 8g x 15mm
2. Euro 6 x 11mm
3. Countersunk 6g x 15mm

A FULL SIZE TEMPLATE, SIMILAR TO THE IMAGE SEEN HERE, IS SUPPLIED WITH YOUR UNIT. THESE INSTRUCTIONS ARE TO BE USED IN CONJUNCTION WITH THAT TEMPLATE.

# RUNNER IMAGE WITH DIMENSIONS

450mm

500, 550mm

600, 650mm

