

Tall	Short
ST22SPT.450.CPWH	ST22SPS.450.CPWH
ST22SPT.500.CPWH	ST22SPS.500.CPWH
ST22SPT.600.CPWH	ST22SPS.600.CPWH

Do not use powered screw drivers for adjustment.

FITTINGS

2 of M6x40 Button head machine screw
 2 of M5x14 Socket head machine screw
 35 of 4x16 Self-tapping screw

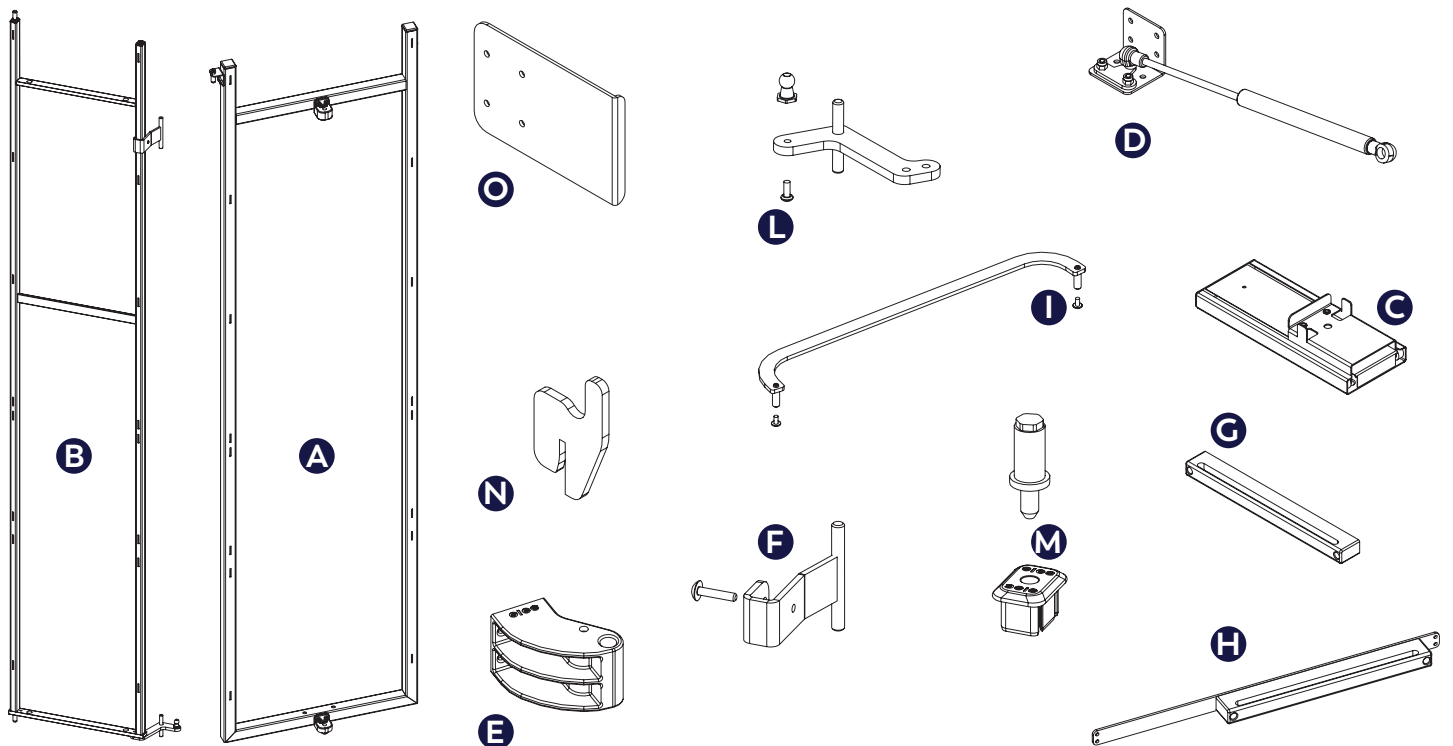
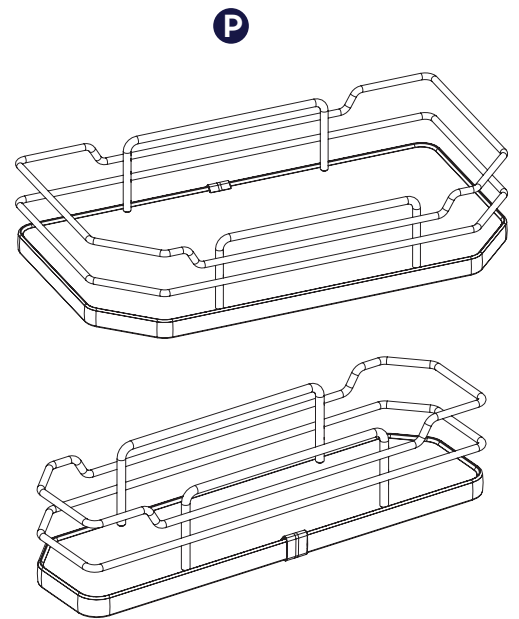
COMPONENTS

- A. Back Frame
- B. Front Frame
- C. Slide Kit
- D. Soft close kit
- E. Plastic Support
- F. Rotation bracket
- G. Plastic guide
- H. Door slide bracket
- I. Drag Lever
- L. Junction
- M. Cap with pin
- N. Basket hook kit
- O. Plastic drilling guide
- P. Baskets set

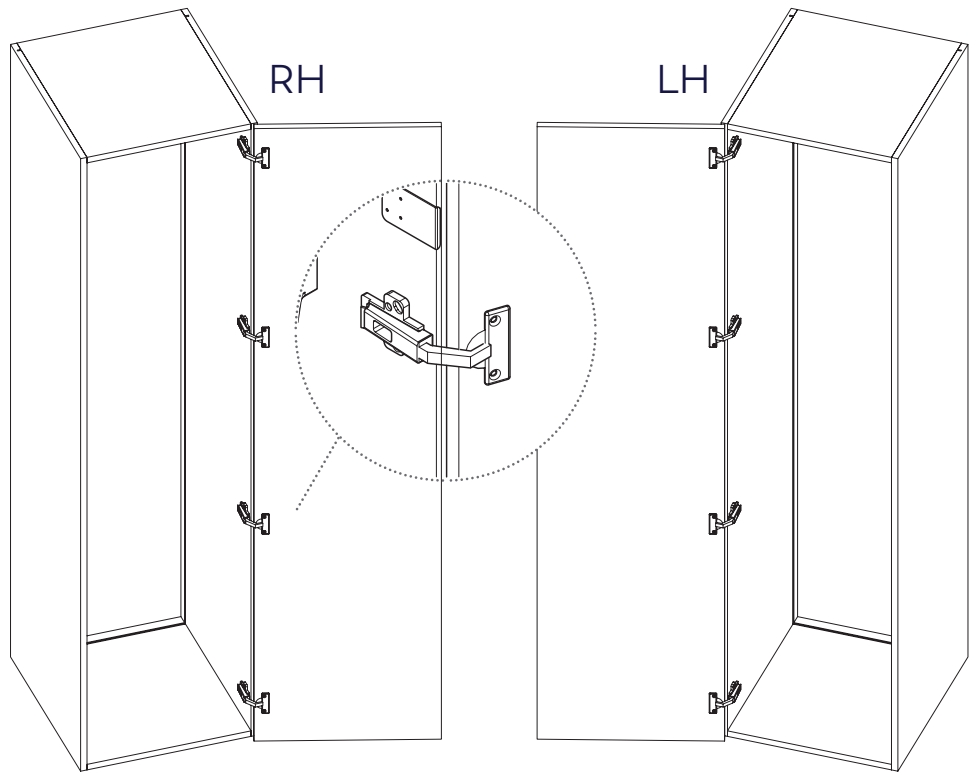
MAINTENANCE

Clean with a soft, dry cloth. Avoid using solvents or abrasive.

TOOLS



Mechanism is supplied in the left hand version. Follow step 1 to swap to right hand version.

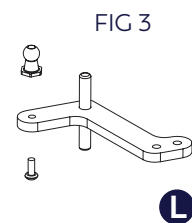
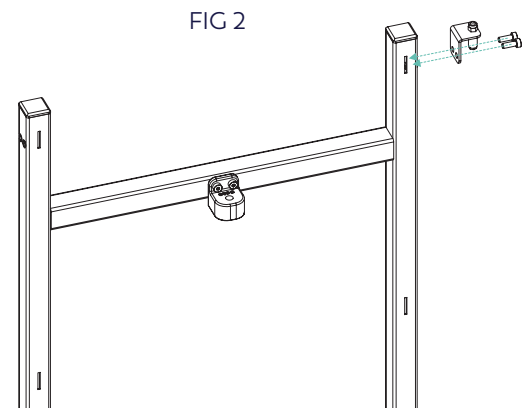
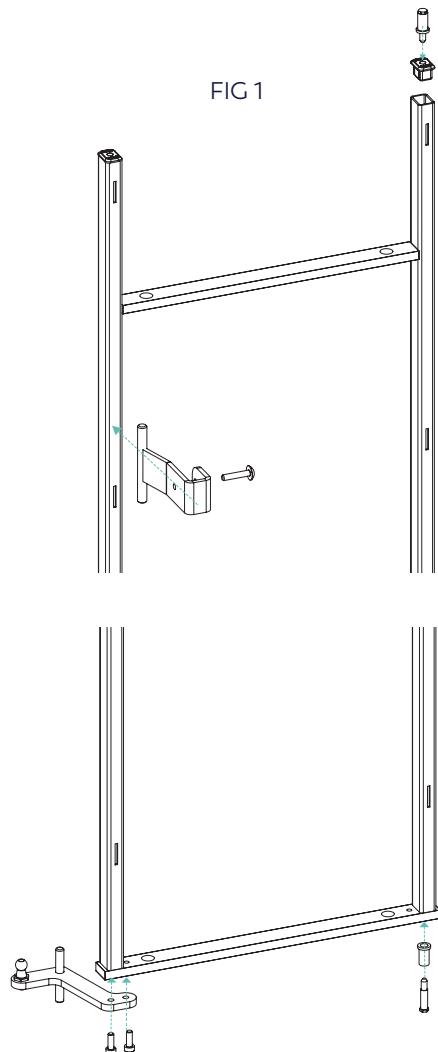
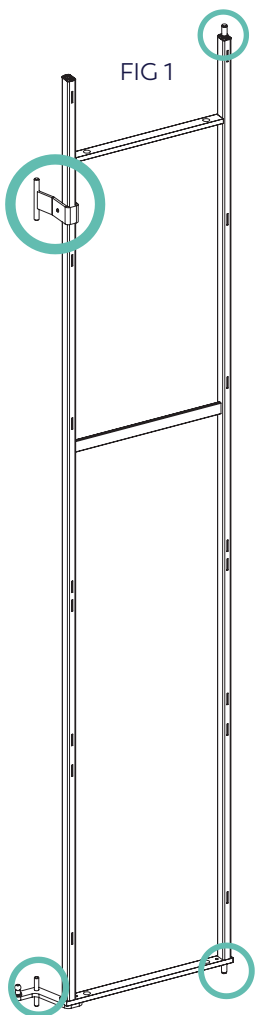


2 of M5x14 Socket head machine screw



1

Move the cap with pin (M) and the junction (L), as in (fig 1) on the front frame. Move the small plate along with the pin into the right side of the back frame (fig 2). Swap ball and pin to opposite sides as shown on the junction (L) (Fig 3)



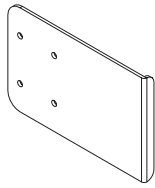
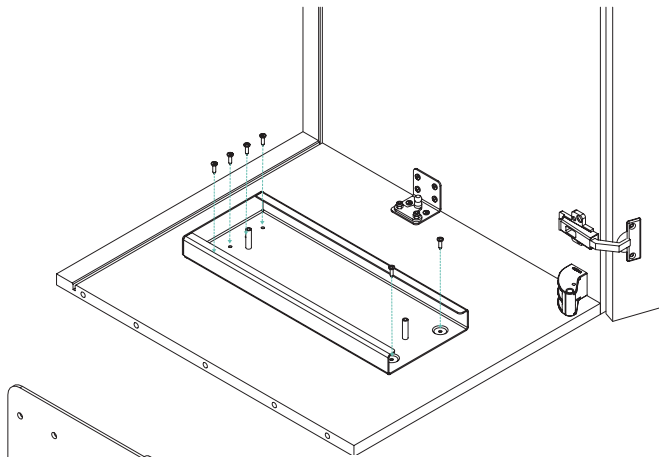


20 of M4x16 Self-tapping screw



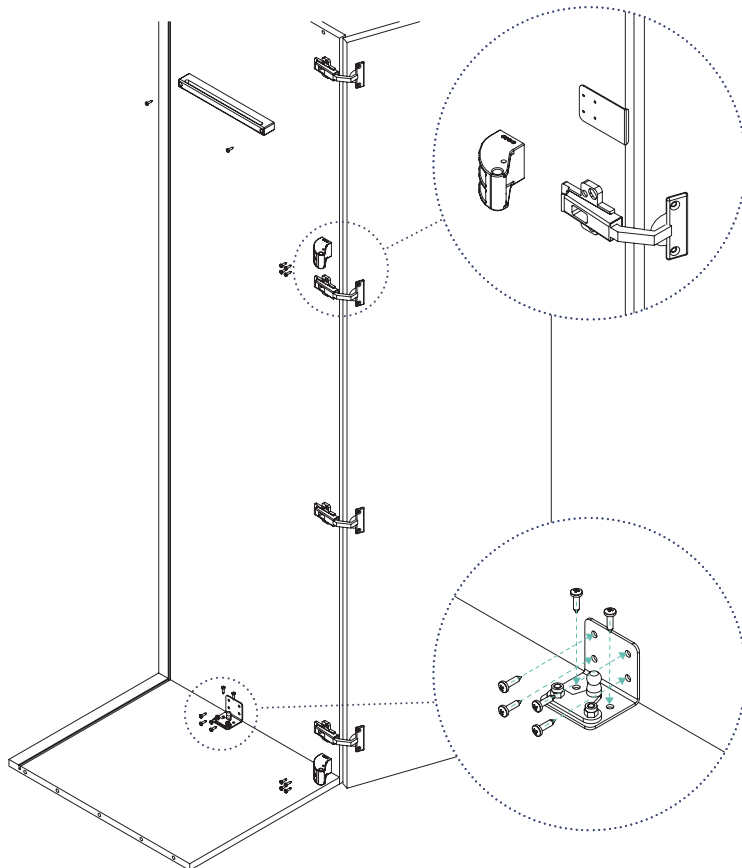
2

Attach the Slide kit (C), the plastic support (E), the soft close kit (D) and the plastic slide (G) following the dimensions shown.

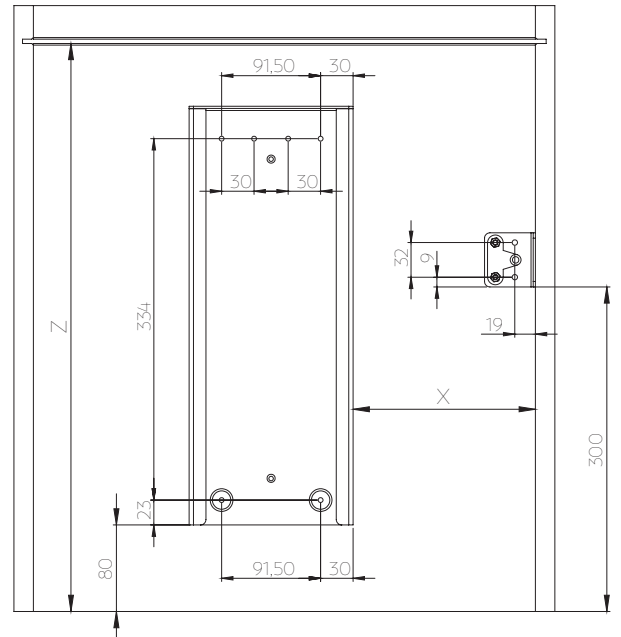


DRILLING TEMPLATE

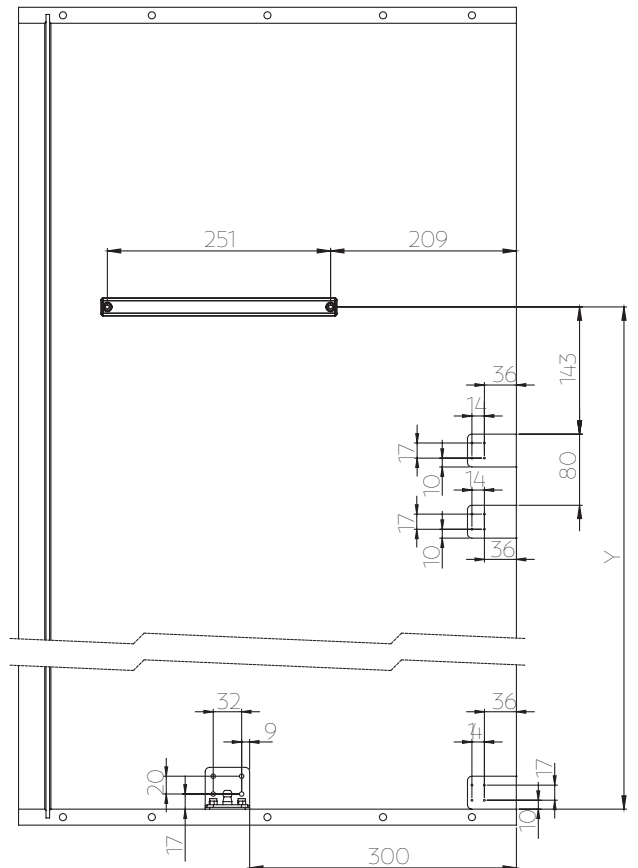
Use the plastic drilling guide (O) to mark positions for plastic supports,



LH drawing shown



	Z	X	Y
ST22SPT.450.CPWH	Min 475	144	1645
ST22SPT.500.CPWH		169	
ST22SPT.600.CPWH		219	
ST22SPS.450.CPWH	Min 475	144	1069
ST22SPS.500.CPWH		169	
ST22SPS.600.CPWH		219	



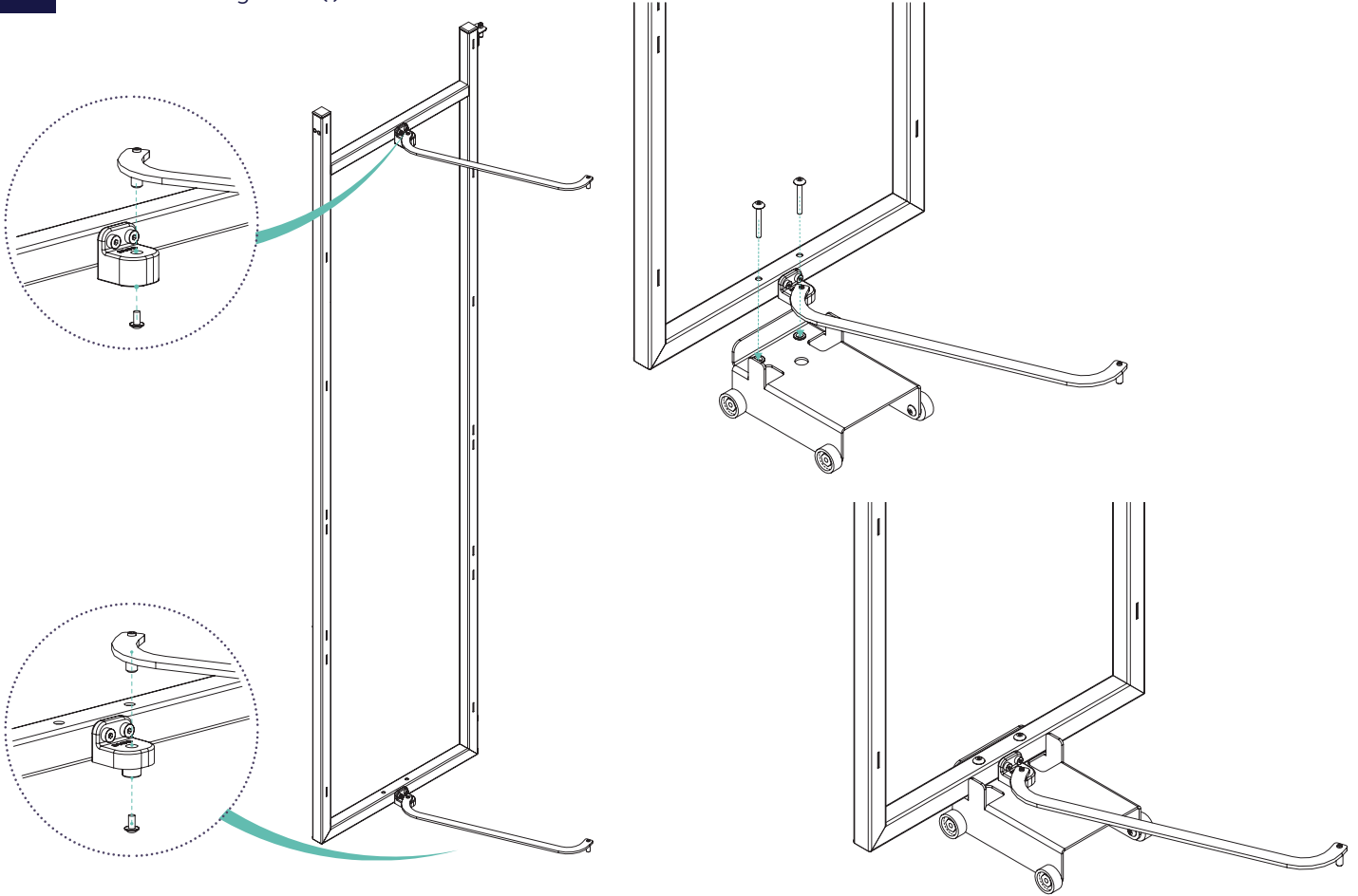


2 of M6x40 Button head machine screw



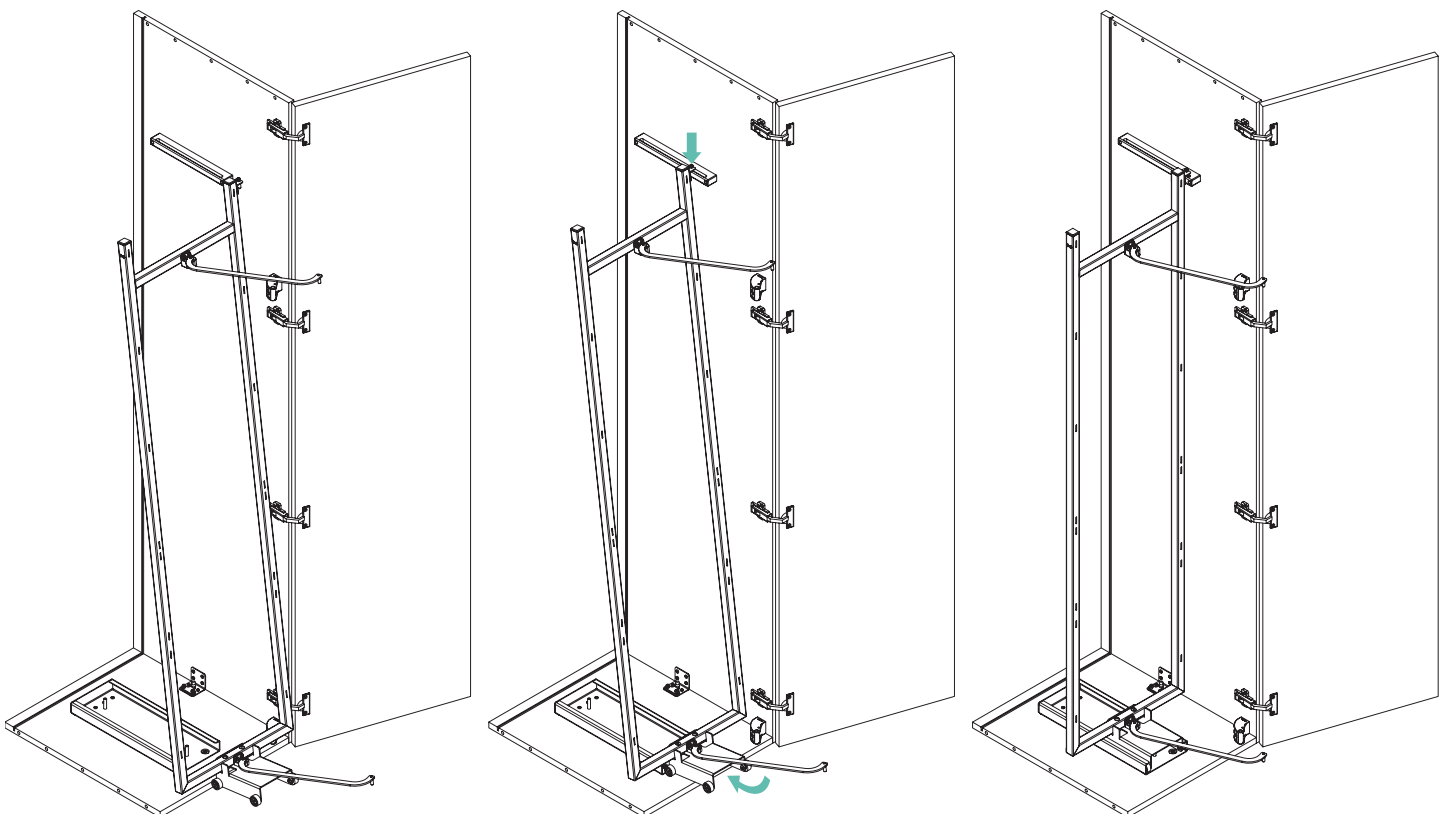
3

Screw the back frame (A) into the slide kit (C) and fix the drag levers (I) as shown.



4

Put the back frame (A) into the plastic guide (G) and the lower side (C) as shown.



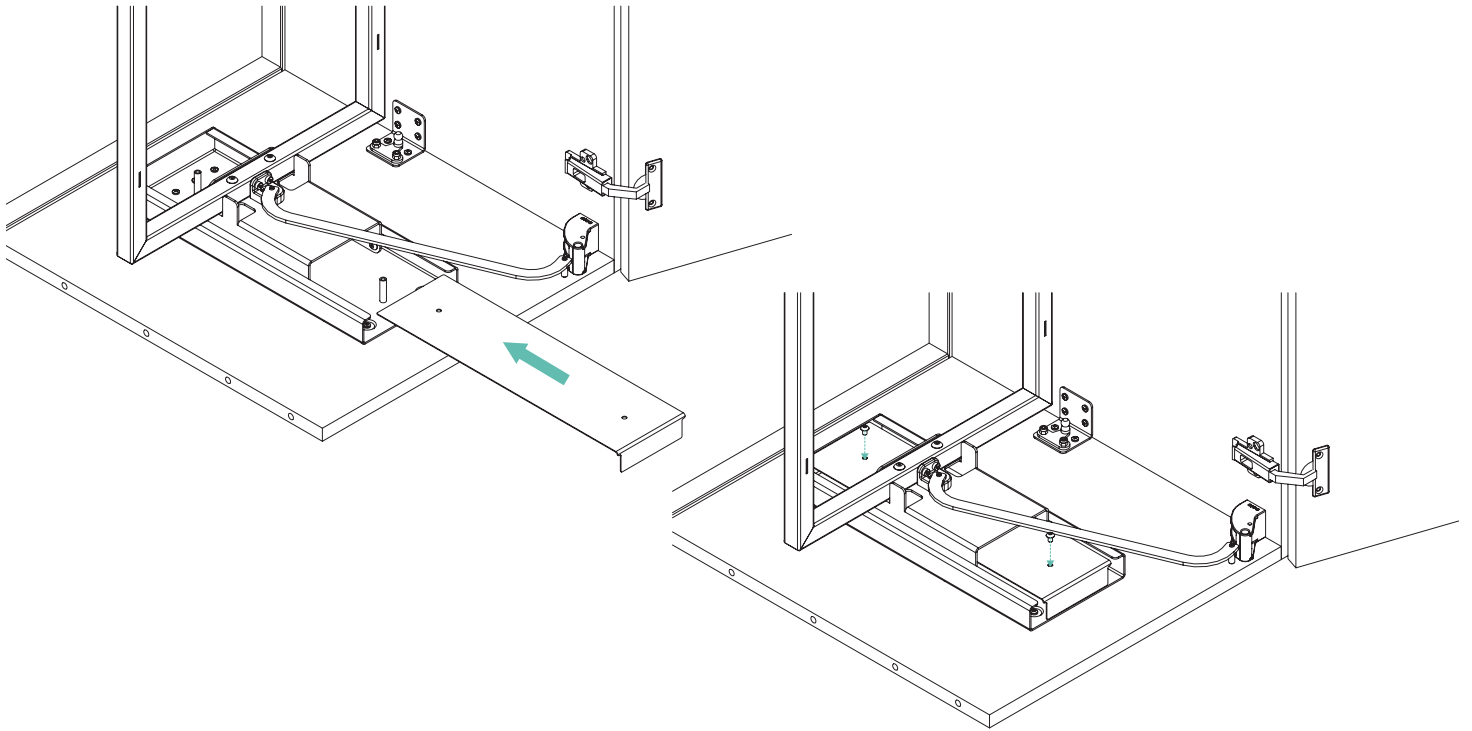


2 of M5x14 Socket head machine screw



5

Assemble the slide cover by using the 2 socket head screws provided

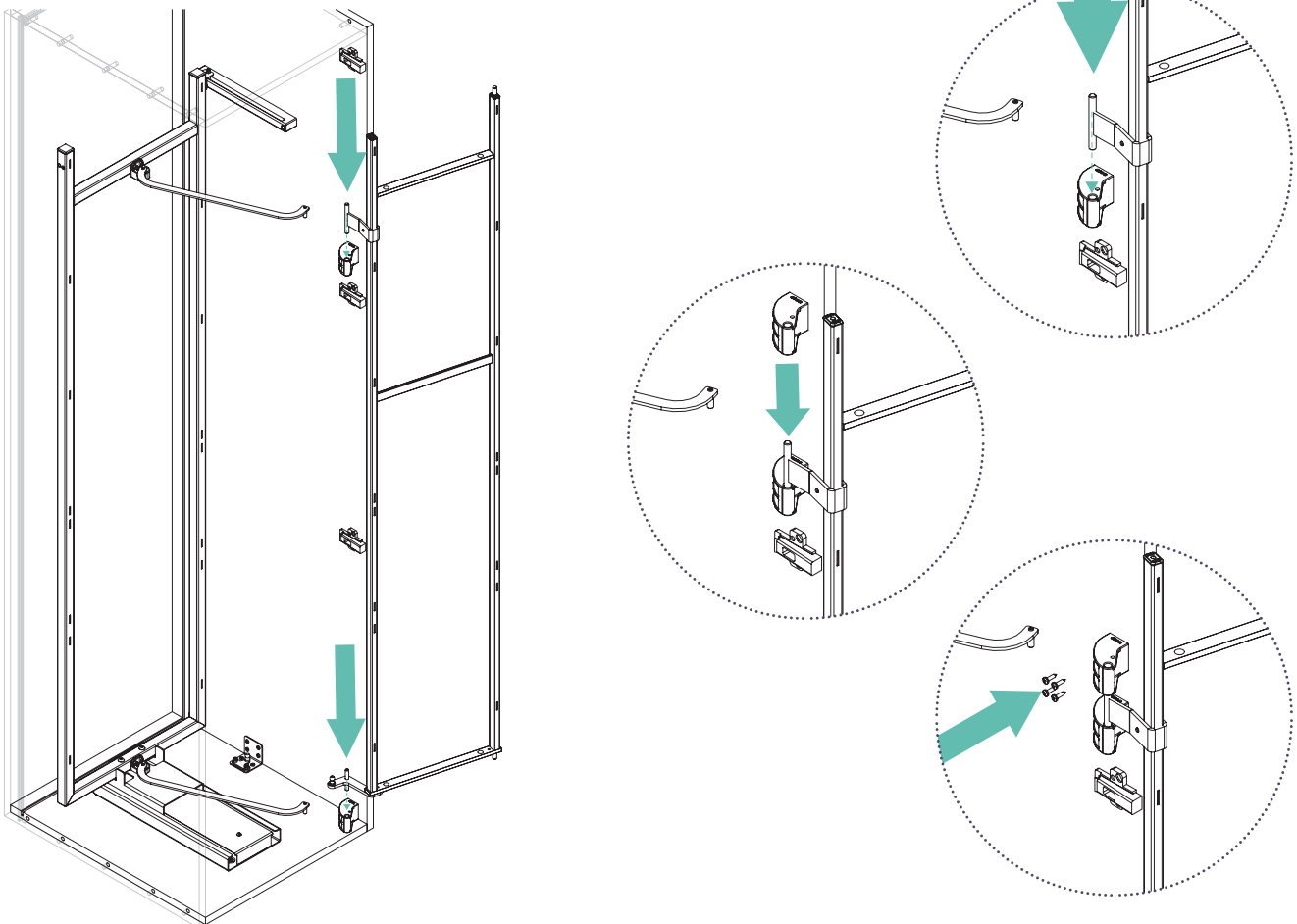


4 of 4x16 Self-tapping screw



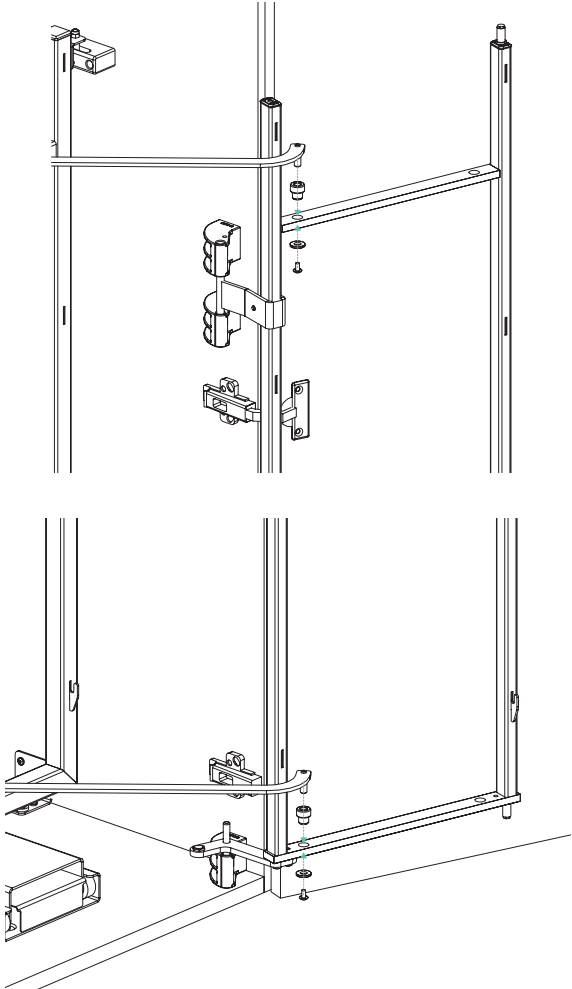
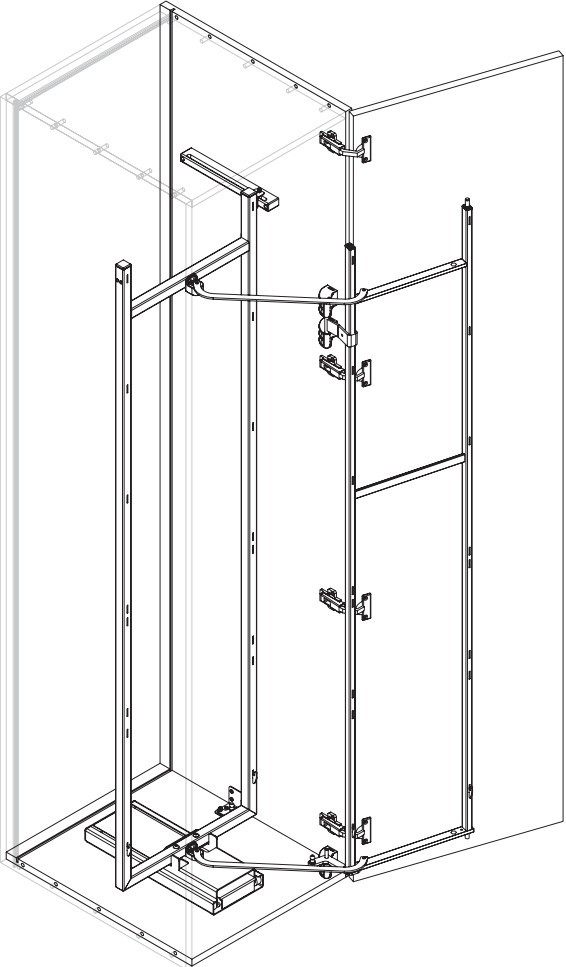
6

Put the front frame (B) into the pre-assembled plastic supports (E) and then attach the third plastic support on the top bracket as shown.



7

Fix the drag levers (I) with the specific provided hardware.



8

Assemble the soft close kit (D) when the mechanism is closed.

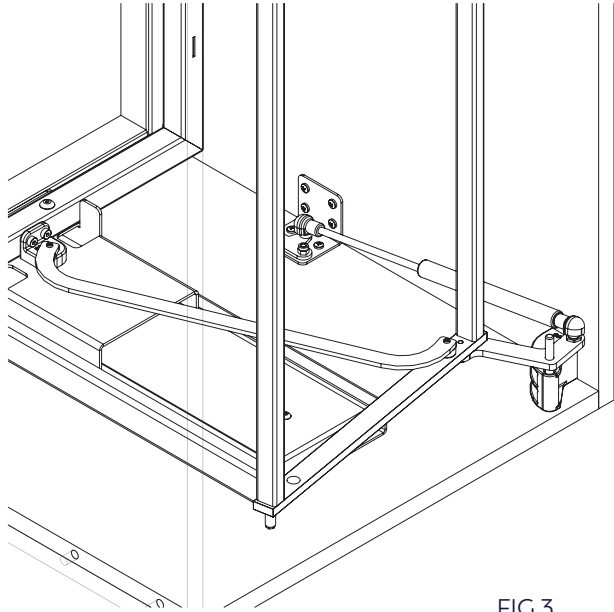
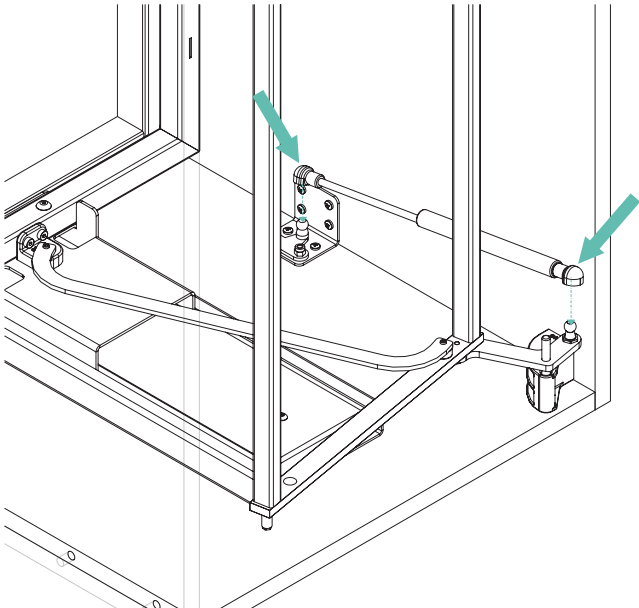


FIG 3

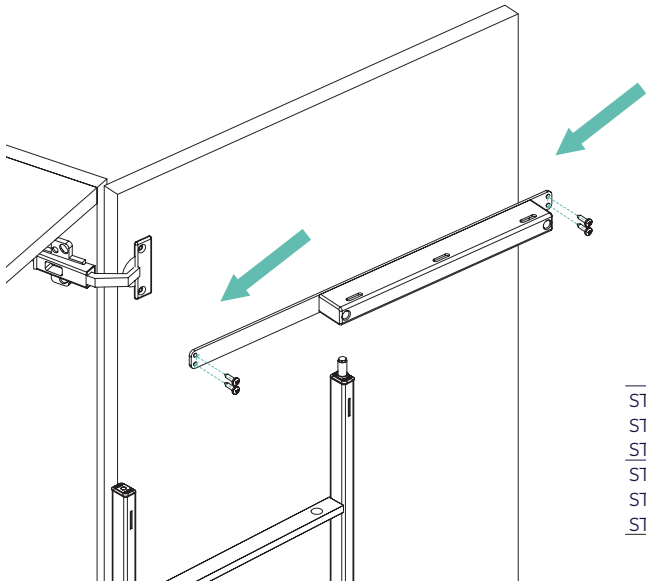


8 of M4x16 Self-tapping screw

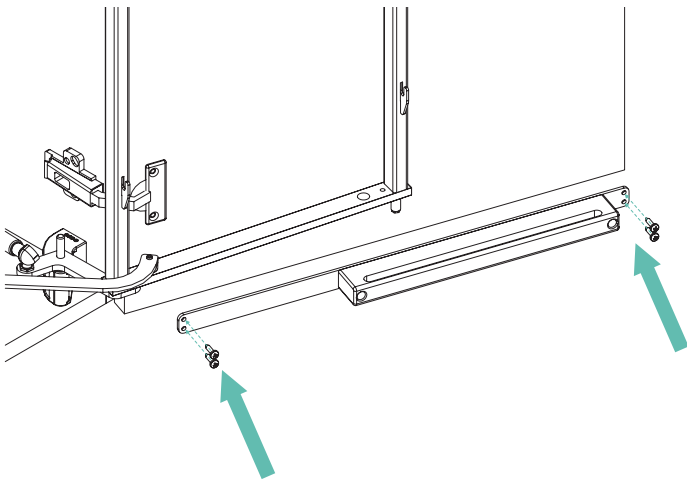
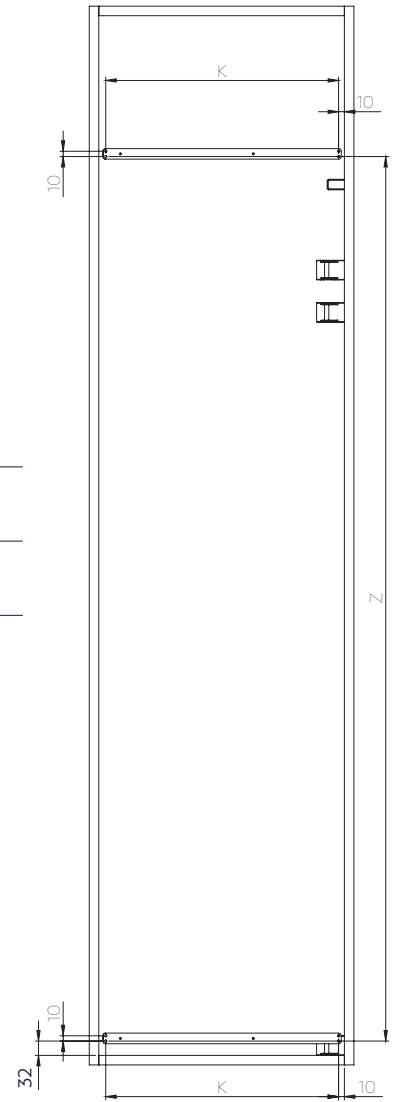


9

Fit the door slide bracket (H) dimensions shown.



	K	Z
ST22SPT.450.CPWH	390	
ST22SPT.500.CPWH	440	1660
ST22SPT.600.CPWH	540	
ST22SPS.450.CPWH	390	
ST22SPS.500.CPWH	440	1084
ST22SPS.600.CPWH	540	



10

Assemble the basket hooks (N) and the baskets (P).

