

Tall	Medium	Short
ST22POP.TL300.CPWH	ST22POP.MD300.CPWH	ST22POP.SH300.CPWH
ST22POP.TL400.CPWH	ST22POP.MD400.CPWH	ST22POP.SH400.CPWH
ST22POP.TL450.CPWH	ST22POP.MD450.CPWH	ST22POP.SH450.CPWH

Do not use powered screw drivers for adjustment.

COMPONENTS

- 25 of 6,3x14 Euro screw
- 2 of M6x20 Machine Screw
- 1 of M6x25 Machine screw
- 3 of M5x15 Washer head machine screw
- 1 of 3mm Allen Key

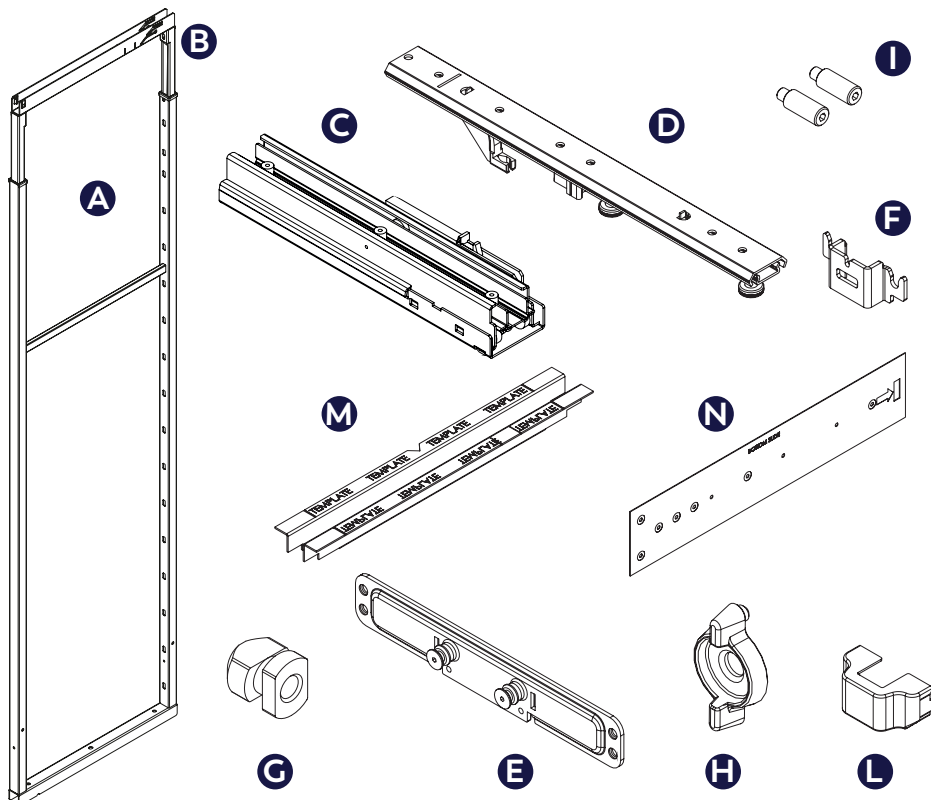
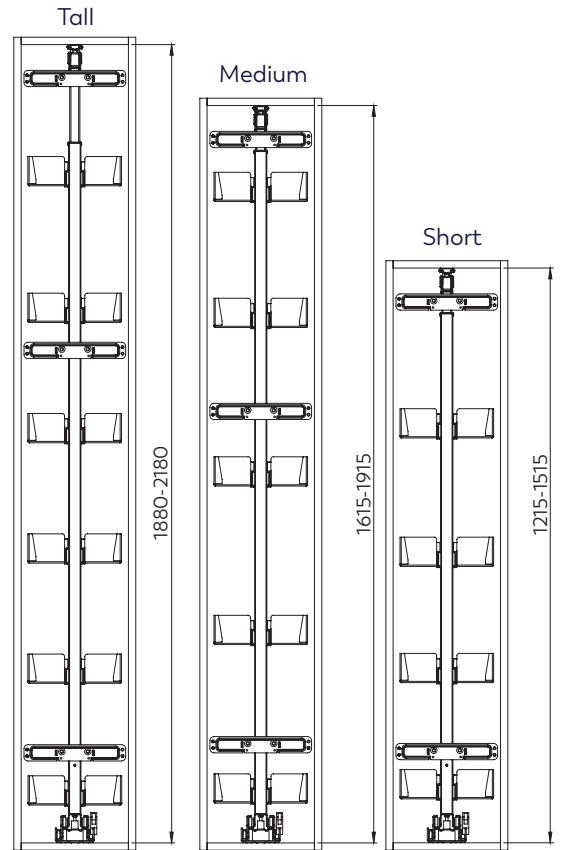
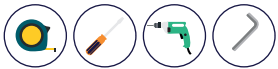
PARTS

- A. Lower frame
- B. Upper frame
- C. Bottom slide
- D. Upper runner
- E. Door bracket
- F. Door bracket frame
- G. Door bracket bush
- H. Door bracket adjuster
- I. Locking pins
- L. Door bracket cover caps
- M. Installation template
- N. Drilling template

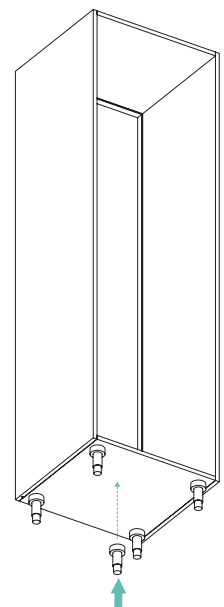
MAINTENANCE

Clean with a soft, dry cloth. Avoid using solvents or abrasive.

TOOLS



Ensure cabinet base is adequately supported





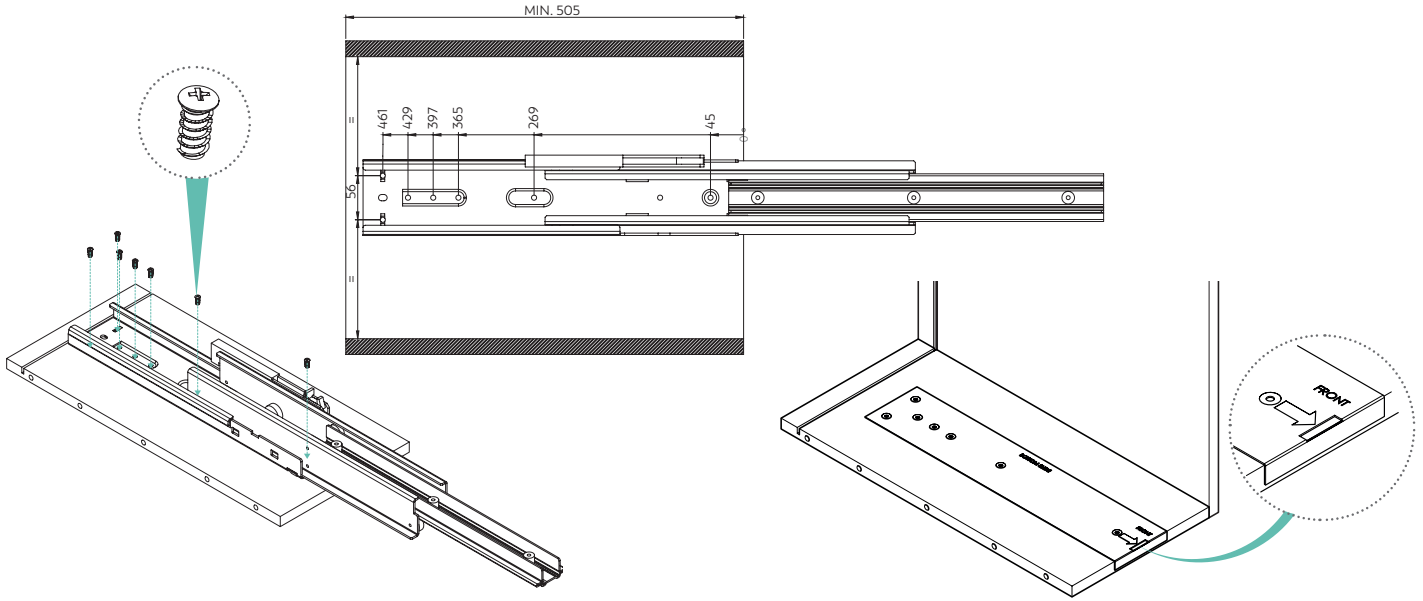
7 of 6,3x14 Euro screw



1

Pre-drill for euro screws at the indicated dimensions with a 5mm bit, or using the drilling template (N) mark screw positions. Securely fix the bottom slide (C) in position, ensuring that the fixings are adequate for the intended load.

WARNING
Ensure bottom slide (C) is securely fixed, especially at the back of the slide.

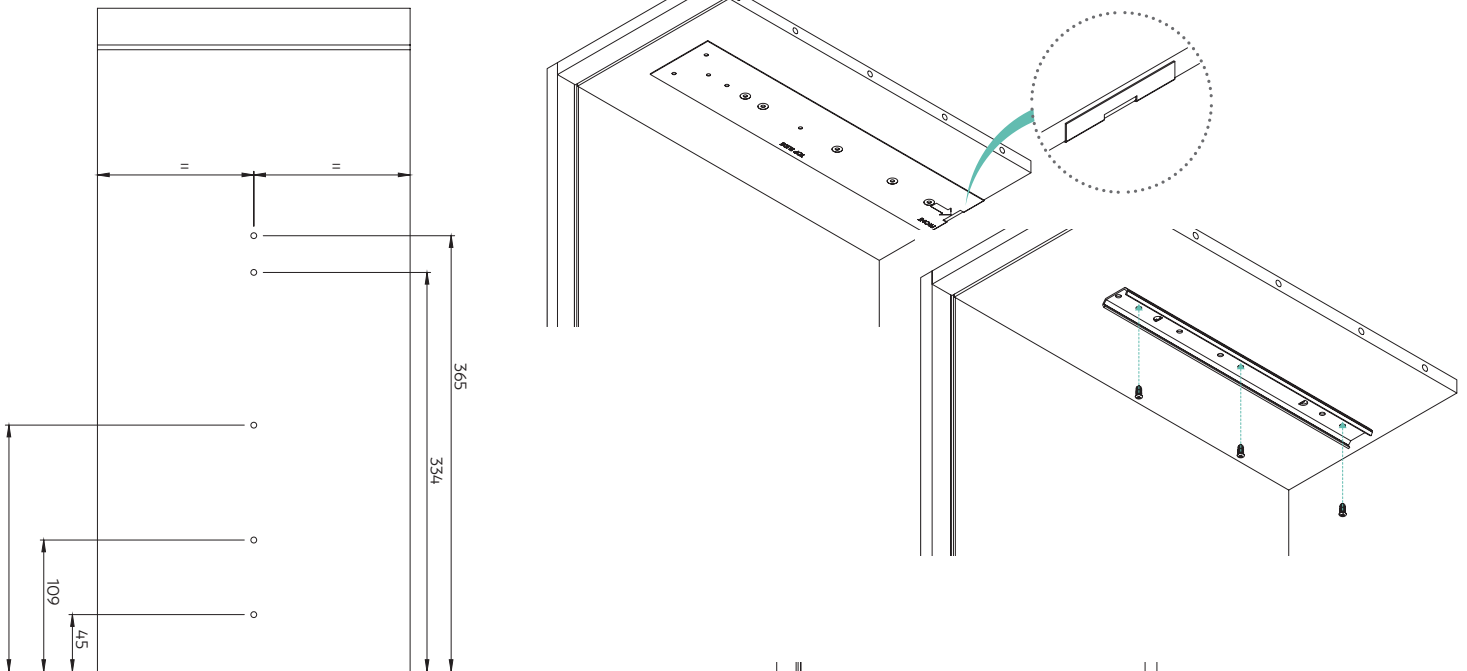


3 of M6.3x14 Euro screw



2

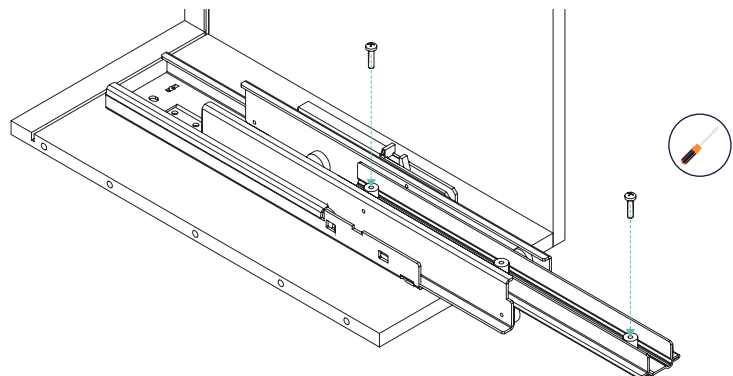
Pre-drill for euro screws the upper side of the cabinet with a 5mm diameter bit as shown, or using the drilling template (N) mark the screw positions. Fix the upper slide (D) in position.



2 of M6x20 Machine Screw

3

Fit the adjusting screws on the bottom slide (C) as shown.





1 of M6x25 Machine screw



4

Fit the frame (A) onto the bottom slide (C) and fix in place with the central screw.

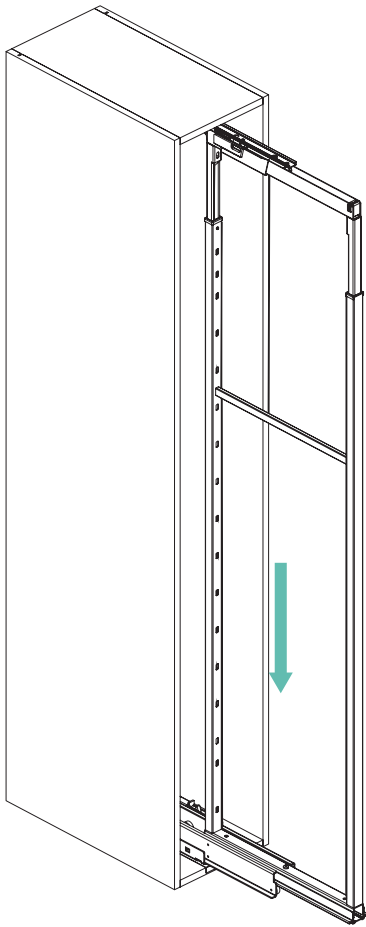


FIG. 1

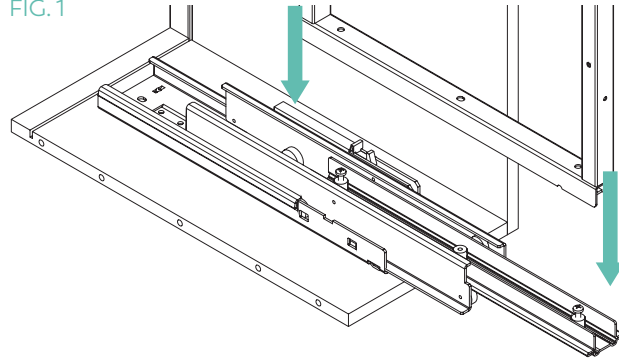
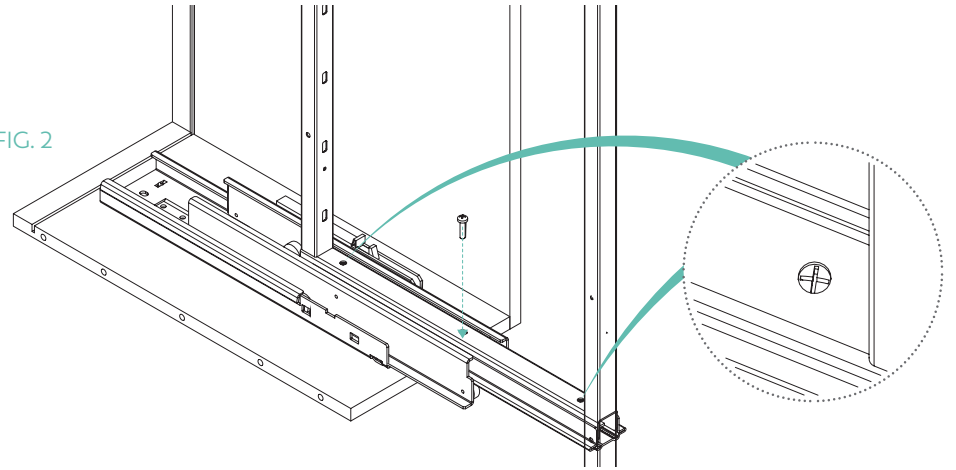
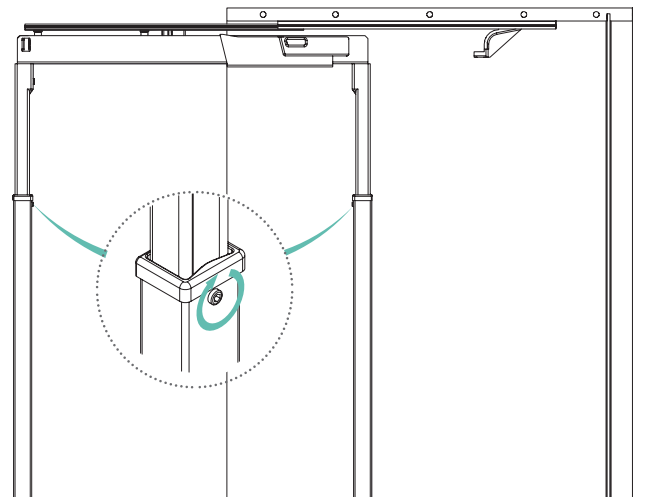
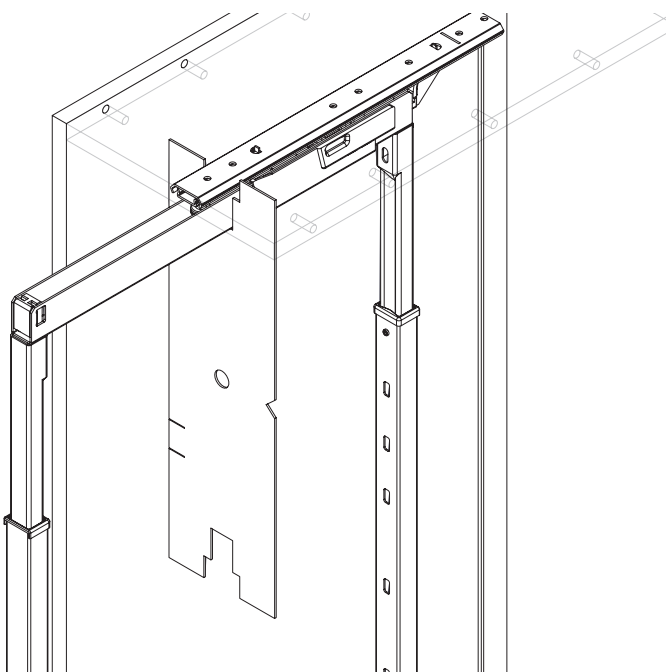


FIG. 2



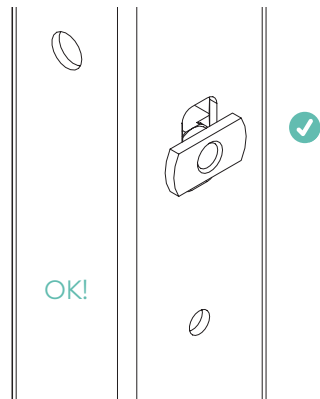
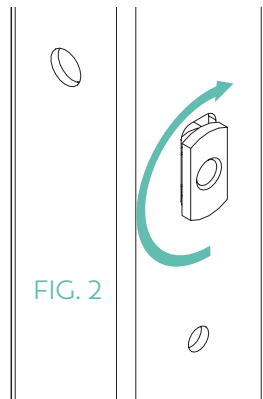
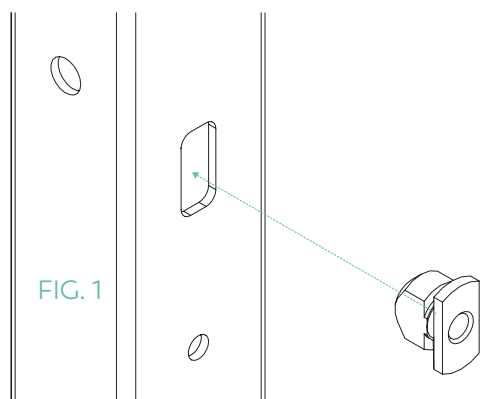
5

Loosen the grub screws on the lower frame (A) and slide the upper frame (B) into the top slide as shown. Use the installation template (M) to set the height of the upper frame (B) and tighten the grub screws to lock the frame in position.



6

Install the door bracket bushes (G) as shown (Fig1 - Fig2) at the positions indicated in step 7 (below)



7

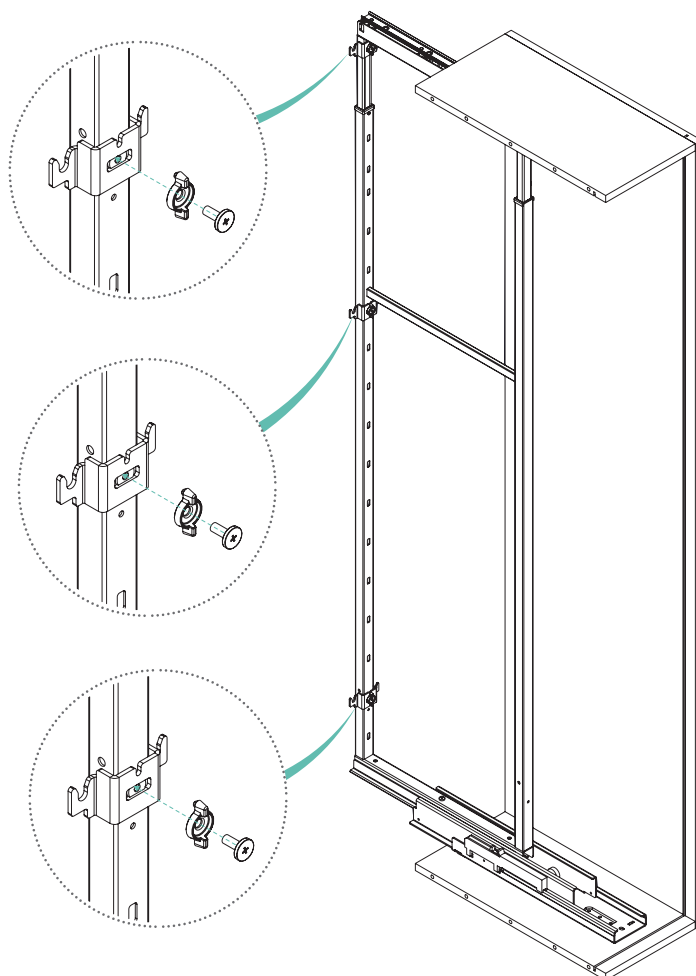
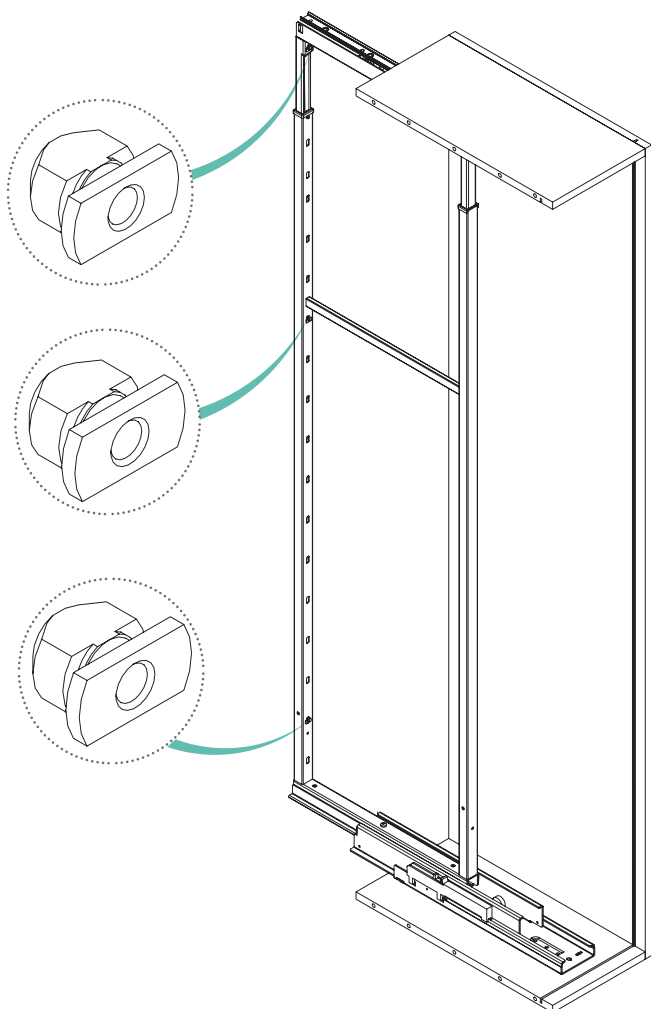


3 of M5x15 Washer head machine screw



8

Install the door bracket frames (F) using the door bracket adjuster (H) and the m5x15 washer head machine screws at the 3 positions shown.





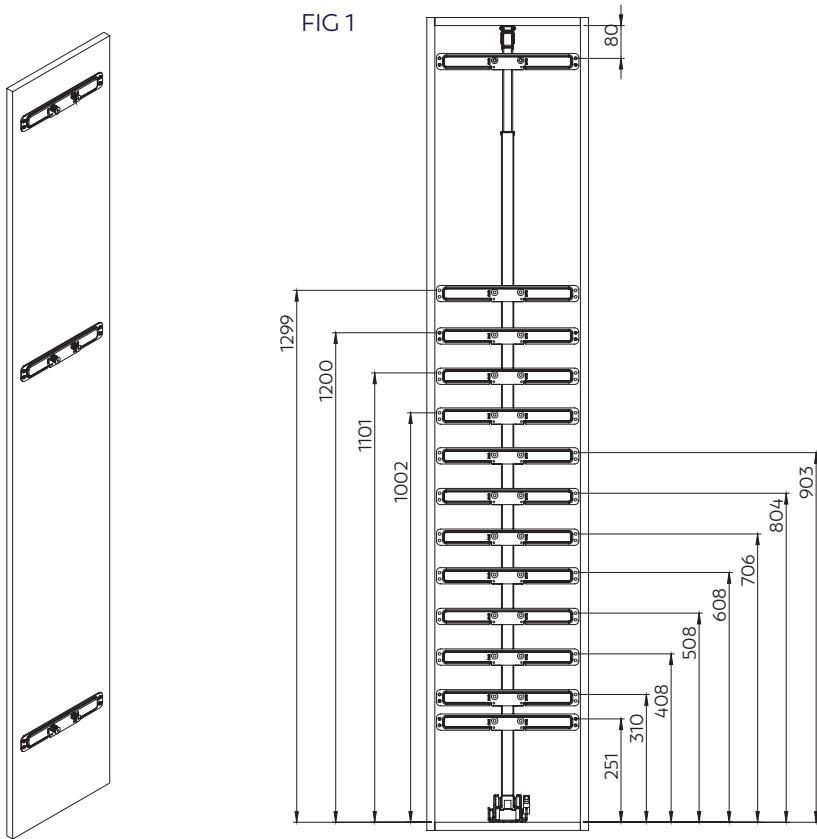
12 of 6,3x14 Euro screw



9

Check height of bracket positions set in step 8 and match with the measurements in fig1. Measure and mark screw positions using the dimensions given. Attach the door brackets (E) to the door and hook the brackets (E) into the door bracket frames (F) as shown in fig2 - fig3

FIG 1



Modular cabinet width	Z
L 300	235
L 400	335
L 450	385

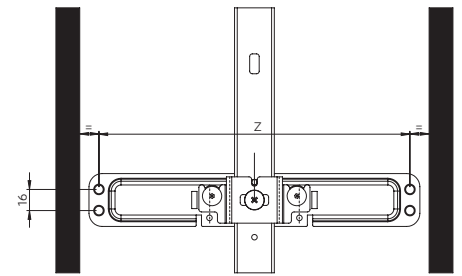


FIG 2

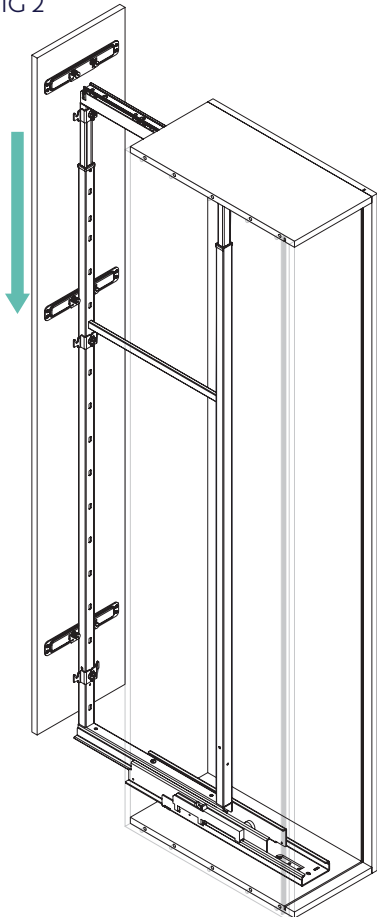
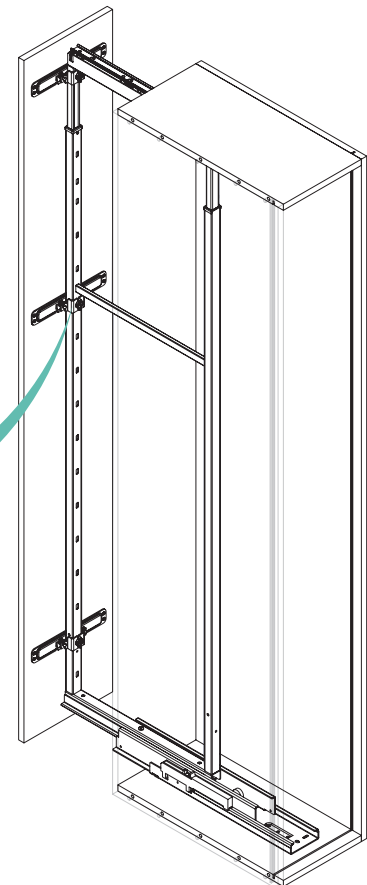
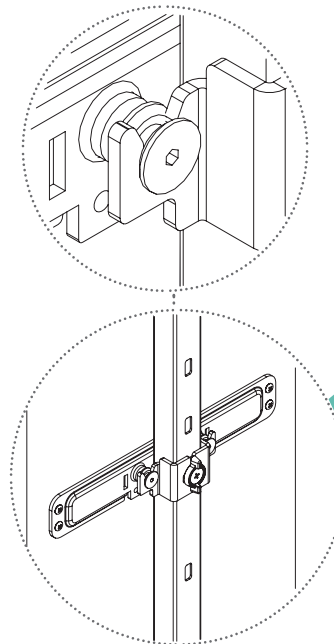
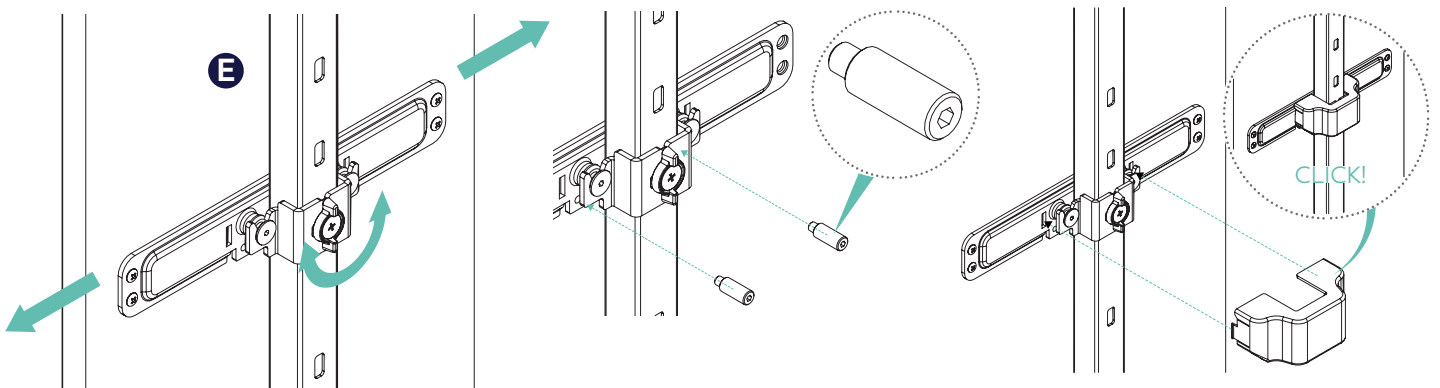
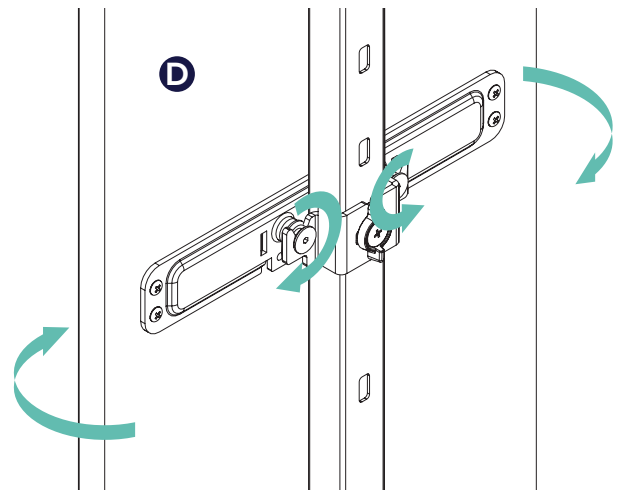
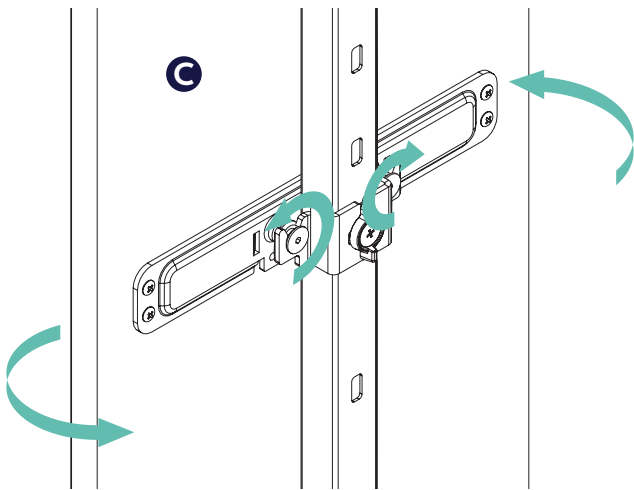
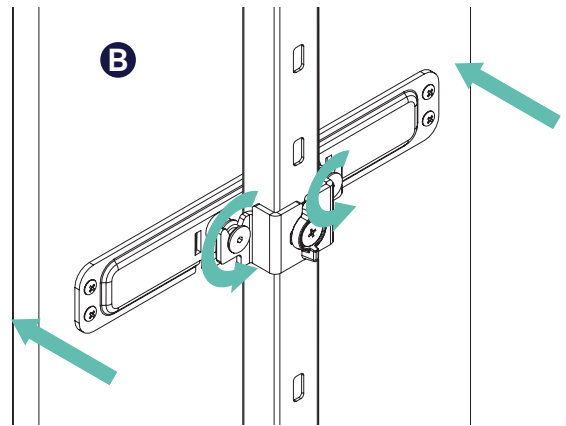
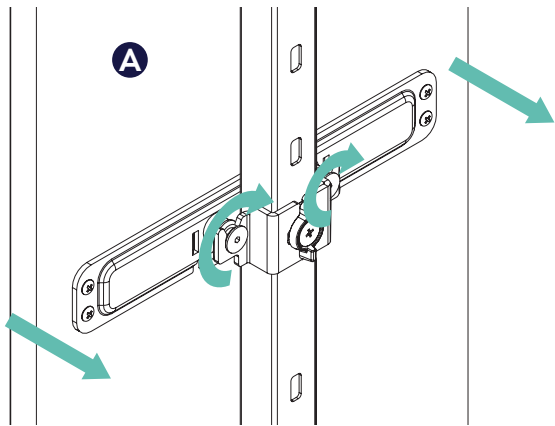


FIG 3

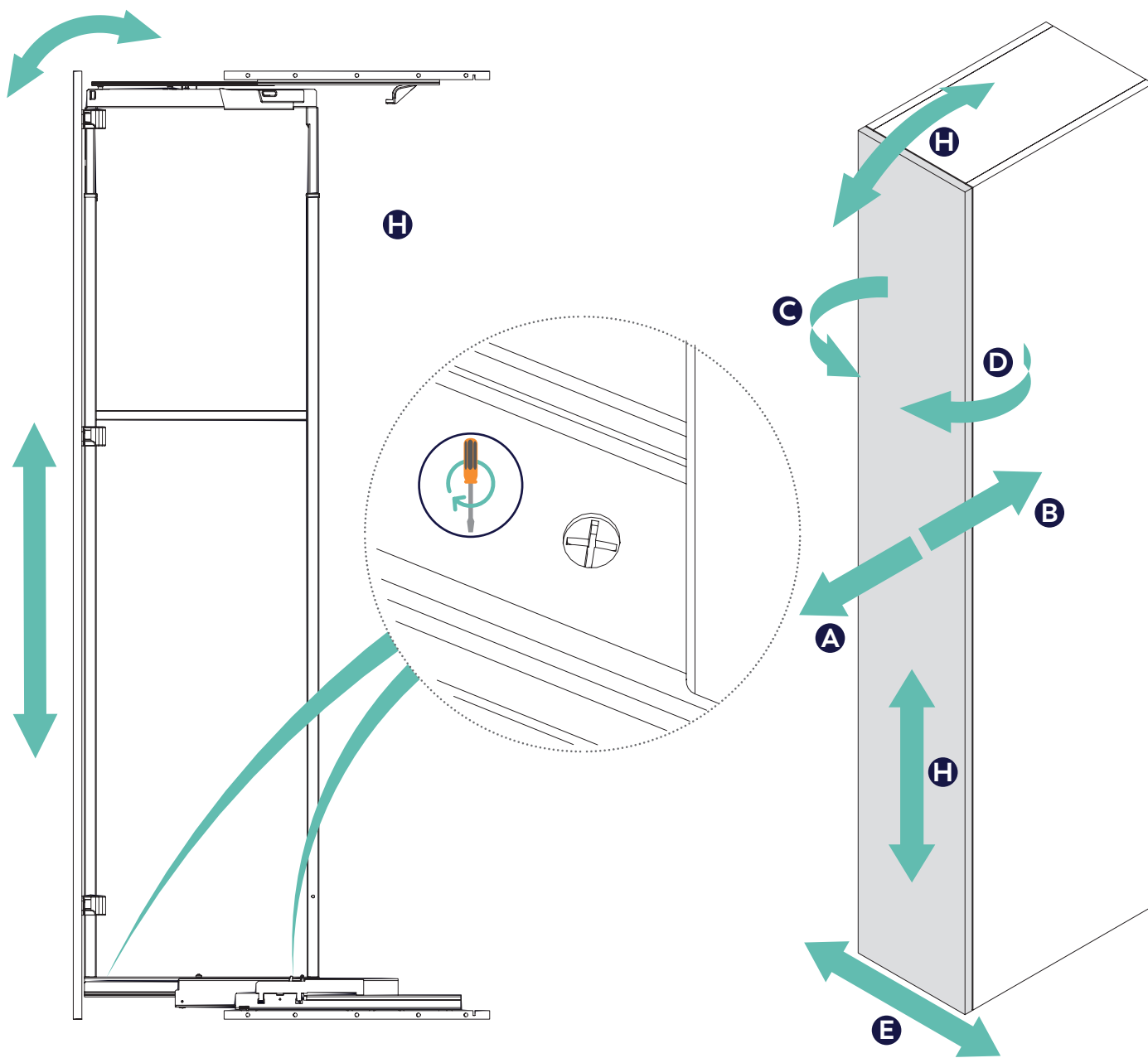


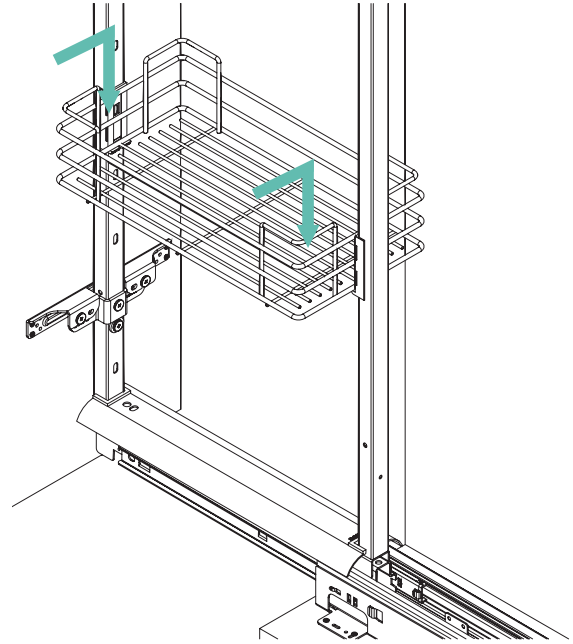
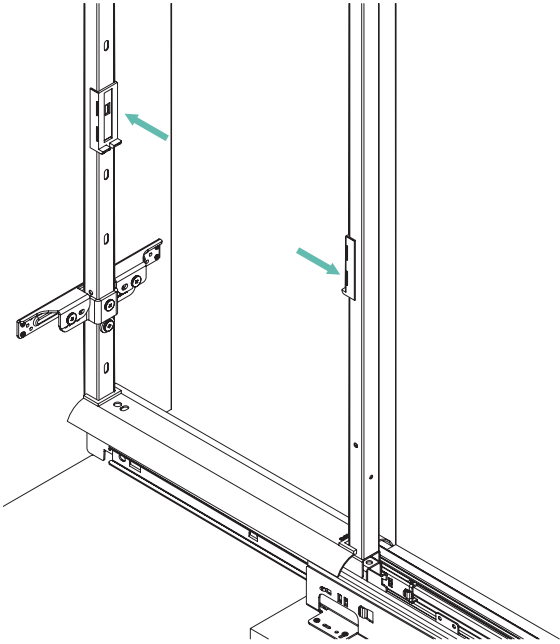
10

Make adjustments using the appropriate screws, as shown. Once all adjustments have been made install the 2 locking pins (I) in the centre door bracket only. Fit door bracket cover caps (L) to all 3 door brackets as shown.



To make frame tilt and height adjustment (H), screw or unscrew the front and rear screws. Once adjusted, fix everything by tightening the centre screw.





Basket removal

